

Bitzer OSK 7051 & OSK 7441-K package

Specifications

Бренд	Bitzer
Тип	OSK 7051 & OSK 7441-K package
Хладагент	Freon
кВт at -10°C/+40°C	185
кВт at -20°C/+40°C	147.4
кВт at -30°C/+40°C	89.6
кВт at -40°C/+40°C	49.8
Электродвигатель Specs	55 kW at 2935 RPM and 15 kW at 2920 RPM
На стальной раме	✓
Примечания	capacity from OSK 7441-K, capacity OSK 7051 not found
Примечания	Please note: we will only offer this as complete cooling solution with capacity matching condensor and evaporators
Stock	1



Description

Used Bitzer OSK 7051 & OSK 7441-K package

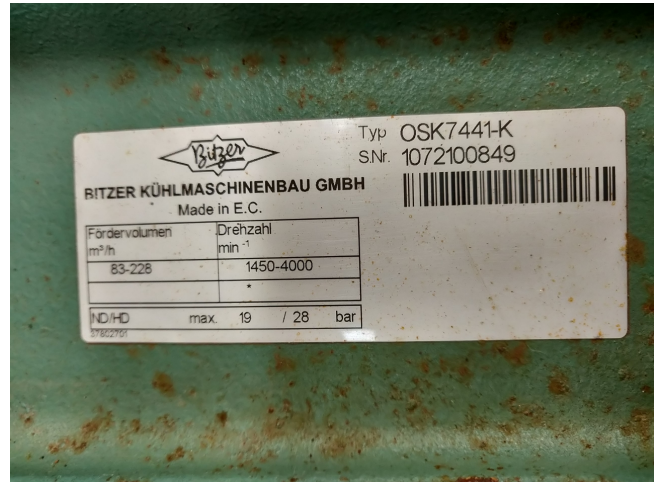
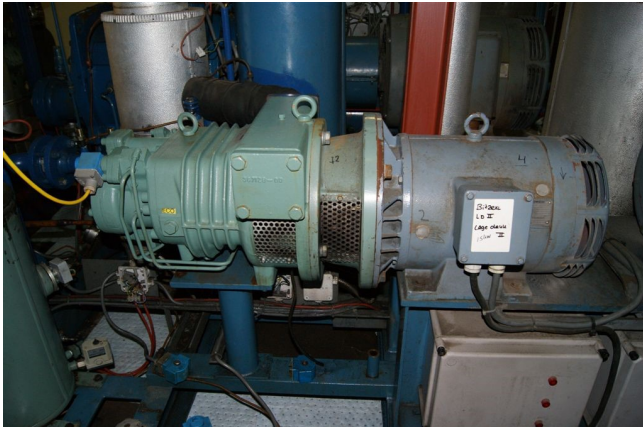
Used well maintained freeze installation Bitzer OSK 7051/OSK 7441-K Open screw compressors. With an 55 kW at 2935 RPM electromotor and 15.6 kW at 2920 RPM electromotor. Our capacity table is based on the used type of Freon. You can also use these compressors on alternative types of Freon. For all the other specs (if available), see the picture of the manufacturer model plate or the attached pdf file.

Please note: we will only offer this as complete cooling solution with capacity matching condensor and evaporators

*Why choose for HOSBV? Were not only the largest used refrigeration specialist in Europe, but also, we deliver all equipment including an extensive test,



warranty and industrial cleaning.
*Optional we can also perform a new
paint job and arrange the logistics.



Compressor model		OSN7441-K		Operating mode		Standard			
Refrigerant		R404A		Speed		2900 /min			
Reference temperature		Dev. point temp.		Useful superheat		100%			
Liq. sub. (in condenser)		0 K		Additional cooling		Automatic			
Suct. gas superheat		10,00 K		Max. discharge gas temp.		80,0 °C			
Result									
Q [W]	Cooling capacity	Qac [kW]	Additional cooling						
P [kW]	Power input	tsu [°C]	Liquid temp.						
COP [-]	COP/EER	pm [bar(a)]	ECO pressure						
mLP [kg/h]	Mass flow LP	Qac [kW]	sub cooler capacity (ECO)						
mHP [kg/h]	Mass flow HP								
ts	to	-15°C	-25°C	-35°C	-45°C	-55°C			
30°C	Q [W]	108507	87405	69478	54416	41881	31483	22986	16104
	P [kW]	36,5	34,5	32,7	31,1	29,7	28,5	27,5	26,7
	COP [-]	2,97	2,53	2,13	1,75	1,41	1,10	0,84	0,60
	mLP [kg/h]	3173	2617	2135	1717	1358	1051	791	572
	mHP [kg/h]	3173	2617	2135	1717	1358	1051	791	572
	Qac [kW]	-	-	-	-	-	3,99	8,37	12,35
tsu [°C]	29,6	29,6	29,6	29,6	29,6	29,6	29,6	29,6	
pm [bar(a)]	-	-	-	-	-	-	-	-	
Qac [kW]	-	-	-	-	-	-	-	-	
40°C	Q [W]	92510	73788	58028	44855	33943	24988	17719	-
	P [kW]	42,6	40,8	39,1	37,5	36,2	35,0	34,1	-
	COP [-]	2,17	1,81	1,49	1,20	0,94	0,71	0,52	-
	mLP [kg/h]	3110	2552	2068	1649	1289	981	721	-
	mHP [kg/h]	3110	2552	2068	1649	1289	981	721	-
	Qac [kW]	-	-	-	4,17	9,00	13,48	17,61	-
tsu [°C]	39,6	39,6	39,6	39,6	39,6	39,6	39,6	-	
pm [bar(a)]	-	-	-	-	-	-	-	-	